

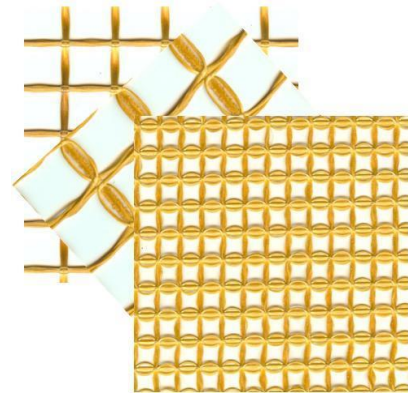
## ROYAGRID

THERMAL CLASS H (180°C)

### DESCRIPTION

The RoyaGrid (glass net) consists of strands in rows, forming rectangular meshes, saturated with a class H modified epoxy resins.

Used as reinforcement in the encapsulation of dry-type transformer coils.



### MAIN CHARACTERISTICS

CHARACTERISTICS	Unit	Tolerance	10 x 8	15 x 15	25 x 15	30 x 20
Weight	g/m <sup>2</sup>	+/- 10%	500	370	410	320
Resine content	%	+/- 10%	20	20	20	20
Thickness	mm	+/- 20%	1.50	1.50	**2.2	2.20
Standard Width	mm	+/- 20	1040	1000	1100	1060
Standard Length	m	+/- 10%	120	160	135	135

Thickness Method Measurement: A sample of 400 cm<sup>2</sup> is compressed between 2 steel plates, loaded at 80 kg. Thickness is the interval average between plates.

\*\*Thickness Method Measurement for RoyaGrid 2515 is done with the same procedure but using 100 kg of pression

### POLIMERIZATION

The RoyaGrid is supplied 100% fully polimerized (C stage), which gives a structural rigidity to the product.

### SUPPLIED FORM

In roll, on resistant carton cores, diameter (ID) 76 mm.

We can supply up to 1800 mm width.

February / 2015

This information is bases on tests carried out in our laboratory. However, do not accept any responsibility for its application.

**S.E.G. ROYAL DIAMOND,S.A.**

Tel- 93 791 80 06

Fax: 93 791 91 25

Polígono Industrial S/N 08319 Dosrius (Barcelona) España

e-mail: [royaldiamond@royaldiamond.es](mailto:royaldiamond@royaldiamond.es)

[www.royaldiamond.es](http://www.royaldiamond.es)